

ProScope HR software guide

Resolution:

- 1280x1024 @ 3.75 frames per second
- 640x480 @ 15 frames per second
- 320x240 @ 30 frames per second

Light Source:

- ProScope HR LED - default setting for use with 30Nx, 50x, 100x, 200x, and 400x ProScope HR lenses.
- Incandescent - home lighting
- Florescent - office lighting
- Daylight - outdoors
- Auto - auto adjusts white balance

OK/Cancel:

- Click to confirm or cancel preference changes and to return to Live or Preview Mode.

File Type:

- JPG - compressed file
- BMP/PIC - uncompressed file

Filename Prefix:

- Default prefix for captured still image file names.

Still Images Folder:

- Click BROWSE icon to browse/set default storage folder. Program default storage can be found in ProScope HR sub folder of user's pictures folder.

OK/Cancel:

- Click to confirm or cancel preference changes and to return to Live or Preview Mode.

Recording Time:

- Adjusts default movie recording time from 2 to 999 seconds. Software and hardware capture buttons will override this setting.

Filename Prefix:

- Default prefix for captured movie file names.

Video Folder:

- Click BROWSE icon to browse/set default storage folder. Program default storage can be found in ProScope HR sub folder of user's movies folder.

OK/Cancel:

- Click to confirm or cancel preference changes and to return to Live or Preview Mode.

Recording Count:

- Adjusts default number of captured time lapse movie frames from 3 to 999. Software and hardware capture buttons will override this setting.

Recording Interval:

- Adjusts the time between captured frames from approx. 1 second up to 25 hours. Total record time up to 2.85 yrs.

Filename Prefix:

- Default prefix for captured time lapse movie file names.

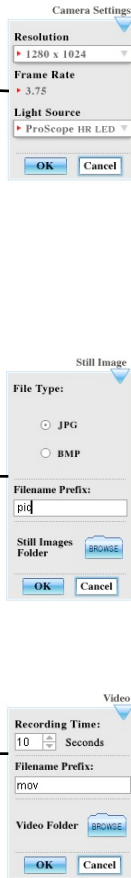
Time Lapse Folder:

- Click BROWSE icon to browse/set default storage folder. Program default storage can be found in ProScope HR sub folder of user's movies folder.

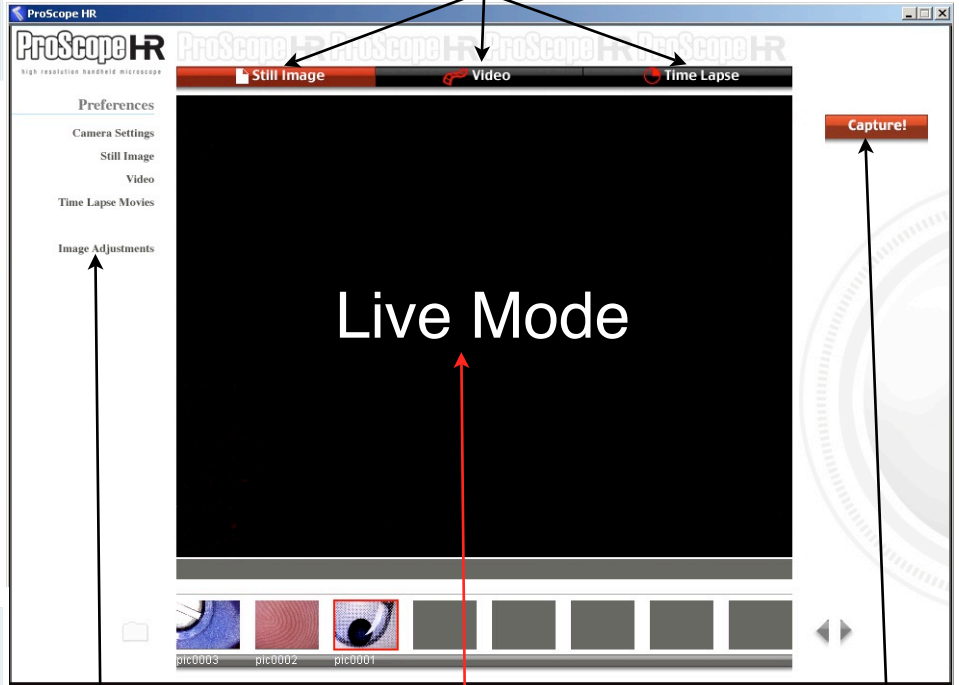
OK/Cancel:

- Click to confirm or cancel preference changes and to return to Live or Preview Mode.

Preview Mode - Click on a thumbnail from the Library Strip to preview. Clicking inside window will return you to Live Mode if the ProScope HR microscope is connected. If no camera is connected, you will remain in Preview Mode.



Capture Mode. Click Still Image, Video, or Time Lapse to set mode.

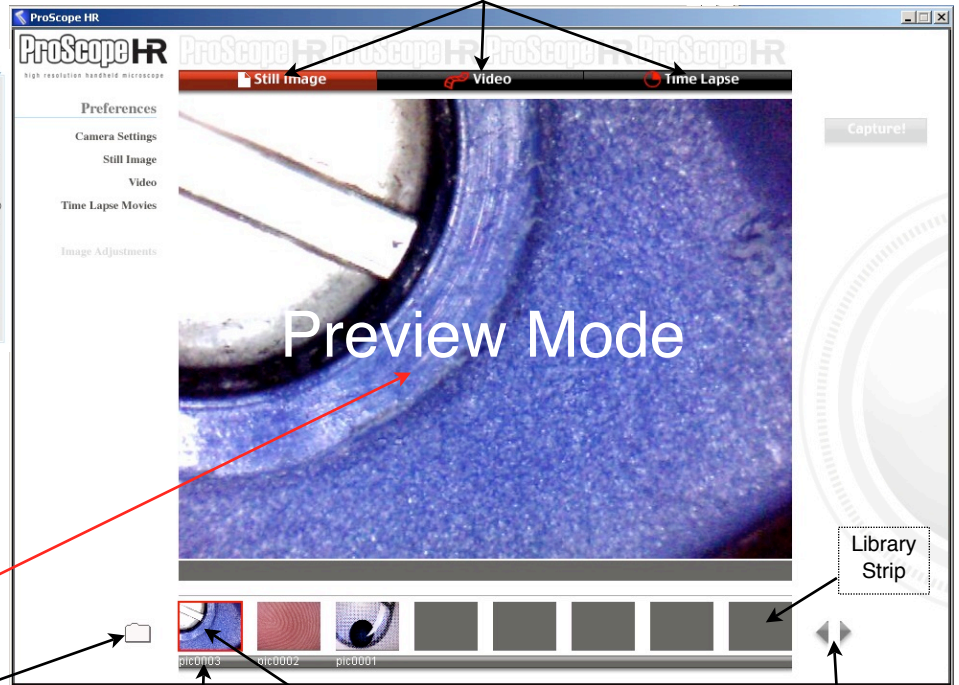


Click to adjust camera hue, saturation, brightness, contrast, and sharpness.

Live Mode - View live images from the ProScope HR microscope. Click inside window or click one of the capture modes to make Live Mode active.

Click to start and stop Still Image, Video, and Time Lapse capture. Or, click ProScope HR microscope hardware capture button.

Click to select Still Image, Video, or Time Lapse Library Strip.



Click folder icon to rename, delete, or to save a copy of the selected image to a different location.

Image/movie file name. Click to edit.

Captured image/movie thumbnail. Click to preview.

Click forward/reverse arrows to view all thumbnails in library.