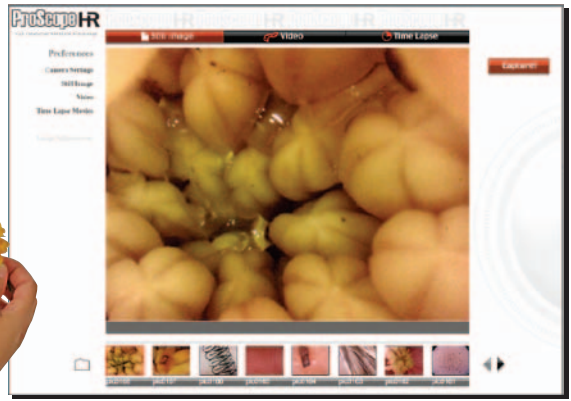


Using ProScope HR Software

Once installed, ProScope HR software basically works like the LCD screen on your digital camera. The main viewscreen displays what the ProScope HR 'sees' in real time until you're ready to capture the image or video. This is called **live mode**. Images and video can be captured two ways:

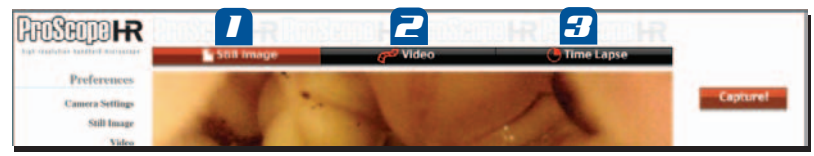
1. Depressing the large white button on the ProScope HR itself.
2. Click the red capture button on the upper right side of the main window.



After an image or video clip has been captured, the image can be previewed by clicking the thumbnails below the main window. This is called **preview mode**.

To return to live mode, click the main window.

There are three capture modes in which to shoot your subject:



1. **Still Image** - located at the top-left of the main window. Use this setting when you want to take still images, not video. You can capture images in three resolutions. Click the bar to activate.
2. **Video** - located at the top-center of the main window. Use this setting when you want to record video. You can record video in three resolutions. Click the bar to activate.
3. **Time Lapse** - located at the top-right of the main window. Use this setting when you want to record subjects in time lapse. You can record time lapse in three resolutions and at various intervals. Click the bar to activate.

To download a complete software guide, go to:
www.proscopehr.com/support

For technical support, email to:
support@bodelin.com

Bodelin Technologies
 6077A SW Lakeview Blvd
 Lake Oswego, OR 97035
800-441-6877
www.bodelin.com

CONGRATULATIONS!

You are now the proud owner of a ProScope HR handheld microscope. In this guide, you'll find out how easy it is to use your ProScope HR. Including; attaching/removing lenses, focusing, adapting your old microscope to digital and more!

Attaching a lens



To **attach** a lens, line up the mark on the side of the base...



...with the dot on the side of the lens.



Turn the lens clockwise until it clicks into place.



Turn on the lens lighting to make sure the lens is properly attached.

Removing a lens



To **remove** a lens, press and hold the lens release button...



...while turning the lens counter-clockwise until the lens dot and mark on the base line up. Then remove the lens.

Focusing



1

For 30N and 50x lenses, turn the lens cone counter-clockwise until it stops. The lens cone is now fully extended and in **touch view** position. Simply touch the object to the end of the lens cone.



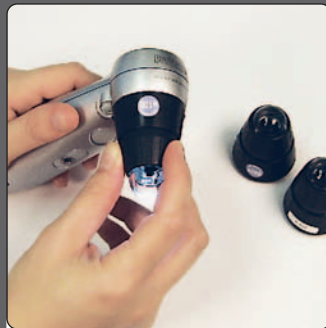
2

Turning the cone clockwise until it stops will fully retract it. The lens cone is now in **distance view** position. The focal distance is approx. 1/2-inch from the cone end. Use this mode if you do not want to touch the lens cone to your subject.



3

The 1/10x lens only works at a distance and can be adjusted in focus and magnification from 0x to 10x by turning the outer cone. Great for use as a digital camera, web cam or dissecting scope.



4

The 100x, 200x and 400x lenses can be adjusted from touch view to distance view by turning the forward part of the lens cone. Unlike the 30N or 50x lens, there is not an exact cone position for touch or distance view.

When using the ProScope HR in distance view position, we recommend the ProScope HR stand -- it will keep your ProScope HR steady and at the perfect focal distance.



Adapting your old microscope into a digital microscope



1

Your old microscope.



2

Remove the ocular or eyepiece. On binocular microscopes, this would be the left ocular.



3

Depending on whether your microscope has a C (camera) mount, you may need to use one or both adapters.



4

This is the C-mount adapter.



5

If you have tiny C-mount threads under the ocular, then you only need the C-mount adapter.



6

If you don't have C-mount threads, then you'll need to use the Lens Tube with C-mount adapter.



7

Simply thread the C-mount adapter on to the lens tube.



8

Connect the C-mount/lens tube to the ProScope like you would any ProScope lens.



9

Now your ProScope HR is able to receive the image and you can view it on your computer screen.